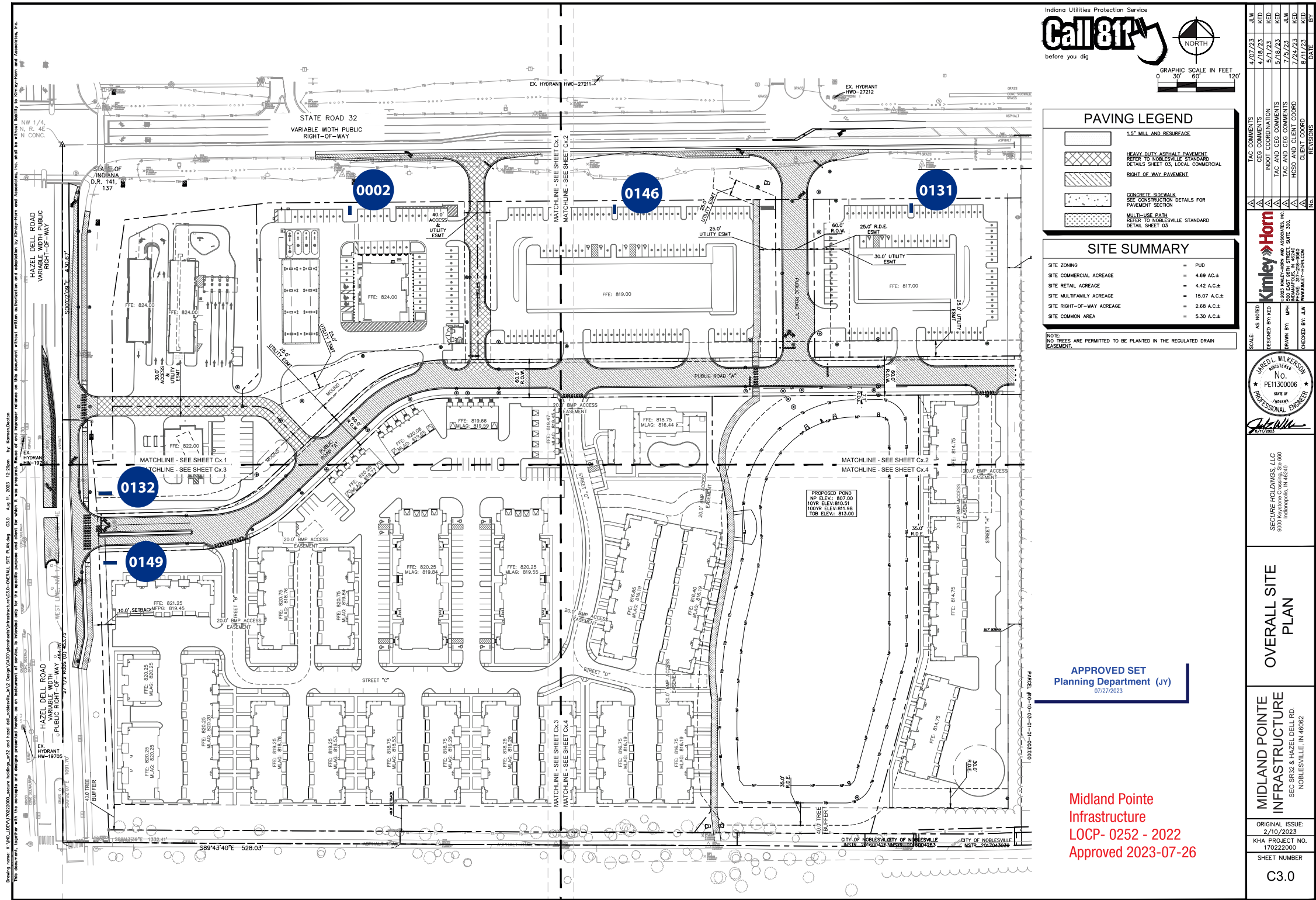


PROPOSED PROGRAM OF SIGNS WITH  
STAFF COMMENTS.

# MIDLAND POINTE





SIGN SPECIFICATIONS

0146 240 SQ FT PYLON

0131 PYLON

0132 PYLON

0002 WAWA MONUMENT

0149 APARTMENT SIGN

\*NOTE: AT LEAST 5' SETBACK FROM  
PROPERTY LINE



COLOR SPECIFICATIONS:	
A	F
B	G
C	H
D	I
E	J

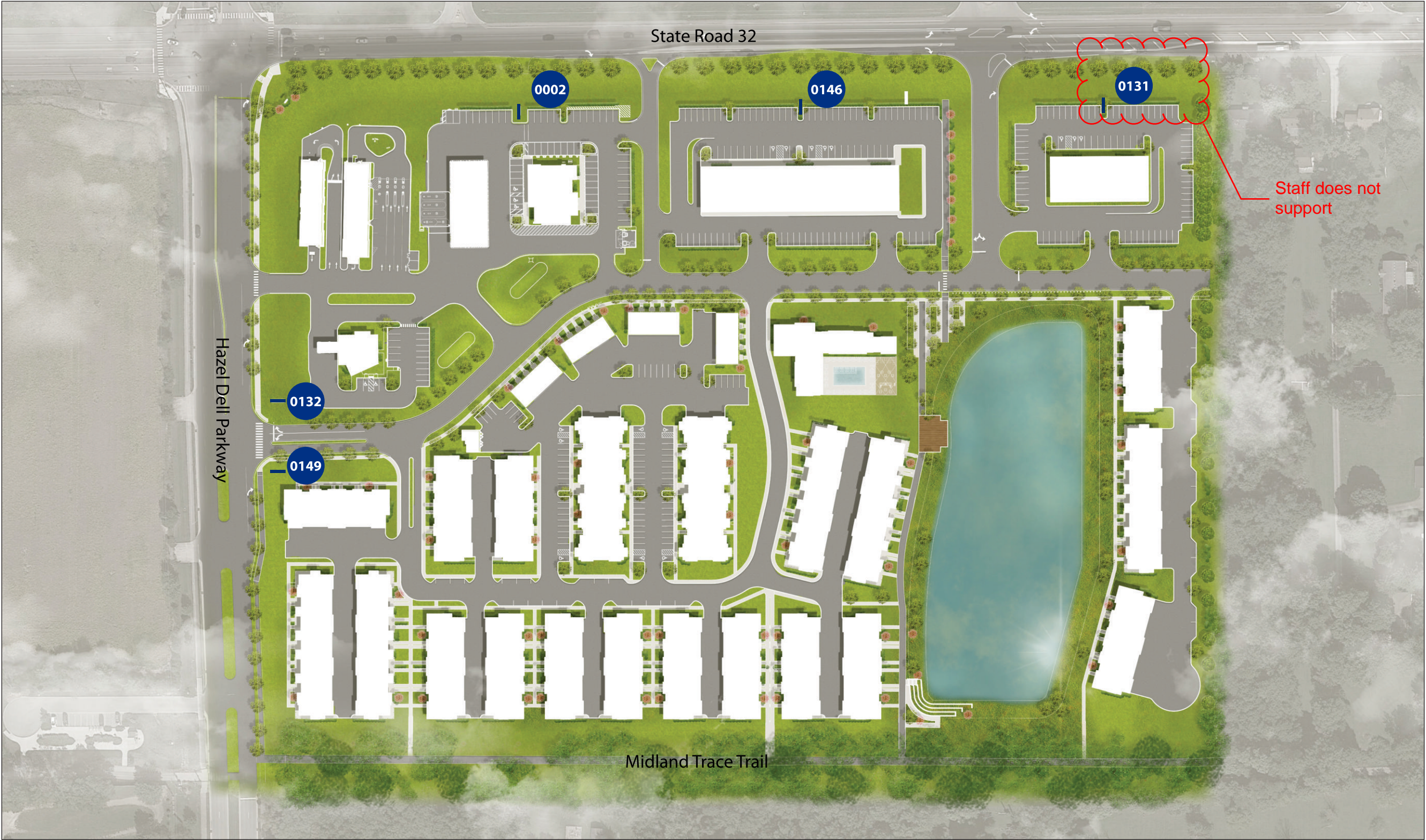
**NOTE:** THERE WILL BE COLOR VARIATIONS FROM THIS PRINTED DRAWING TO THE FINAL PRODUCT. COLORS SPECIFIED WILL ALWAYS BE MATCHED AS CLOSELY AS POSSIBLE. RENDERING IS BASED ON ESTIMATED DIMENSIONS. A FINAL SURVEY MAY ALTER ILLUSTRATED REPRESENTATION AND PLACEMENT.

**IF ILLUMINATED:** WILL BE WIRED TO 120 VOLT UNLESS OTHERWISE SPECIFIED. THIS SIGN IS INTENDED TO BE INSTALLED IN ACCORDANCE WITH THE REQUIREMENTS OF ARTICLE 600 OF THE NATIONAL ELECTRICAL CODE AND/OR OTHER APPLICABLE LOCAL CODES. THIS INCLUDES PROPER GROUNDING AND BONDING OF THE SIGN.

SCI REP: CB	DESIGNER: NK	PERMIT INFORMATION: N/A	
DATE: 06/22/2023	REVISION DATE: 12/01/2023	FINAL DATE & BY:	SHEET #: 1 / 7



SITE MAP



SIGN SPECIFICATIONS

- 0146 240 SQ FT PYLON
- 0131 PYLON
- 0132 PYLON
- 0002 WAWA MONUMENT
- 0149 APARTMENT SIGN

\*NOTE: AT LEAST 5' SETBACK FROM PROPERTY LINE



COLOR SPECIFICATIONS:

A	F
B	G
C	H
D	I
E	J

NOTE: THERE WILL BE COLOR VARIATIONS FROM THIS PRINTED DRAWING TO THE FINAL PRODUCT. COLORS SPECIFIED WILL ALWAYS BE MATCHED AS CLOSELY AS POSSIBLE. RENDERING IS BASED ON ESTIMATED DIMENSIONS. A FINAL SURVEY MAY ALTER ILLUSTRATED REPRESENTATION AND PLACEMENT.

IF ILLUMINATED: WILL BE WIRED TO 120 VOLT UNLESS OTHERWISE SPECIFIED. THIS SIGN IS INTENDED TO BE INSTALLED IN ACCORDANCE WITH THE REQUIREMENTS OF ARTICLE 600 OF THE NATIONAL ELECTRICAL CODE AND/OR OTHER APPLICABLE LOCAL CODES. THIS INCLUDES PROPER GROUNDING AND BONDING OF THE SIGN.

SCI REP: CB	DESIGNER: NK	PERMIT INFORMATION: N/A	
DATE: 06/22/2023	REVISION DATE: 12/01/2023	FINAL DATE & BY:	SHEET #: 1 / 7



STATE RD 32 240 SQ FT MULTI-TENANT SIGN

FABRICATE AND INSTALL QTY 1 INTERNALLY  
ILLUMINATED D/F PYLON SIGN WITH FAUX MASONRY BASE

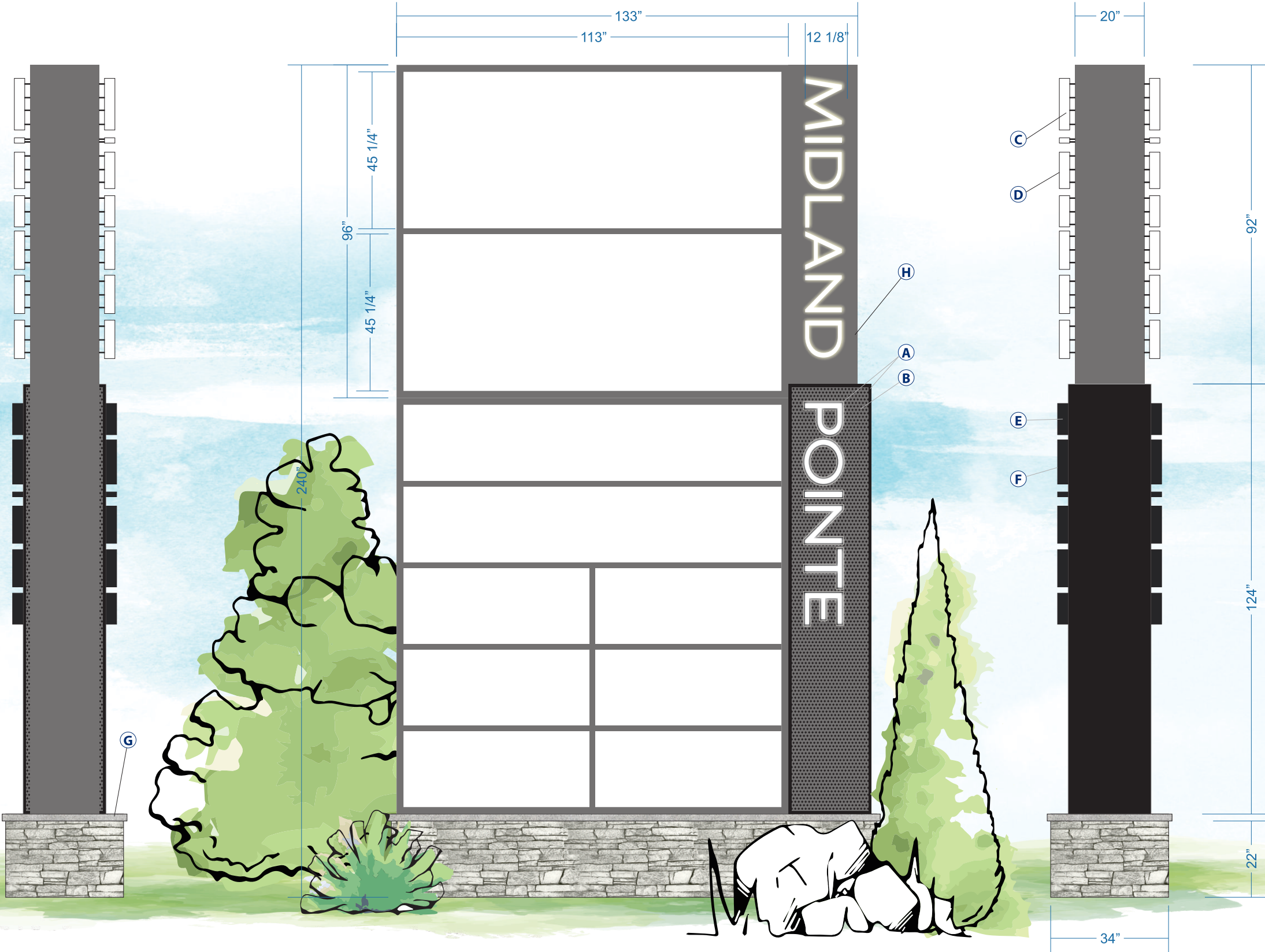
“MIDLAND” CABINET  
BODY - 2” ALUMINUM ANGLE SKINNED IN .090 ALUMINUM  
PAINTED TO MATCH SPECS

“MIDLAND POINTE” LETTERS ON BACKER PANELS  
FACES - 3/16” 7328 WHITE ACRYLIC  
RETURNS - 3” TO MATCH SPECS  
TRIM CAPS - 1” TO MATCH SPECS  
BACKS - .063 ALUMINUM  
LEDS - STREETFIGHTER CHOICE - H0  
BACKER PANELS - .090 ALUMINUM PAINTED TO MATCH SPECS

“POINTE” CABINET  
BODY - 2” ALUMINUM ANGLE SKINNED IN .090 ALUMINUM  
PAINTED AND PRINTED TO MATCH SPECS

MAIN CABINET  
BODY - 2” ALUMINUM ANGLE SKINNED IN .090 ALUMINUM  
PAINTED TO MATCH SPECS  
TENANT PANELS - 3/16” WHITE POLYCARBONATE  
VINYL - MATCH SPECS  
RETAINERS - 2” TO MATCH SPECS  
DIVIDER BARS - 1 1/2” TO MATCH SPECS

BASE  
BODY - 2” SQ ALUMINUM TUBING SKINNED IN .090 ALUMINUM  
W/ TEXTURE PLUS LEDGESTONE SELECT INTERLOCKING  
FAUX WALL PANELS  
CAP - 2” SQ ALUMINUM SKINNED IN .090 ALUMINUM PAINTED WITH SAND  
TEXTURE  
FOOTER- CONCRETE FOOTER  
POST - QTY 2 - 4” SCH 40



COLOR SPECIFICATIONS:

- |                   |                                  |
|-------------------|----------------------------------|
| A PMS 426 C BLACK | F BLACK TRIM CAPS                |
| B DIG. PRINT      | G PMS 7 C COOL GREY (SAND TEXT.) |
| C WHITE RETURNS   | H PMS 424 C CHARCOAL GREY        |
| D WHITE TRIM CAPS | I                                |
| E BLACK RETURNS   | J                                |

NOTE: THERE WILL BE COLOR VARIATIONS FROM THIS PRINTED DRAWING TO THE FINAL PRODUCT. COLORS SPECIFIED WILL ALWAYS BE MATCHED AS CLOSELY AS POSSIBLE. RENDERING IS BASED ON ESTIMATED DIMENSIONS. A FINAL SURVEY MAY ALTER ILLUSTRATED REPRESENTATION AND PLACEMENT.

IF ILLUMINATED: WILL BE WIRED TO 120 VOLT UNLESS OTHERWISE SPECIFIED. THIS SIGN IS INTENDED TO BE INSTALLED IN ACCORDANCE WITH THE REQUIREMENTS OF ARTICLE 600 OF THE NATIONAL ELECTRICAL CODE AND/OR OTHER APPLICABLE LOCAL CODES. THIS INCLUDES PROPER GROUNDING AND BONDING OF THE SIGN.

SCI REP:  
CB

DATE:  
05/12/2023

DESIGNER:  
NK

REVISION DATE:  
12/01/2023

PERMIT INFORMATION:  
N/A

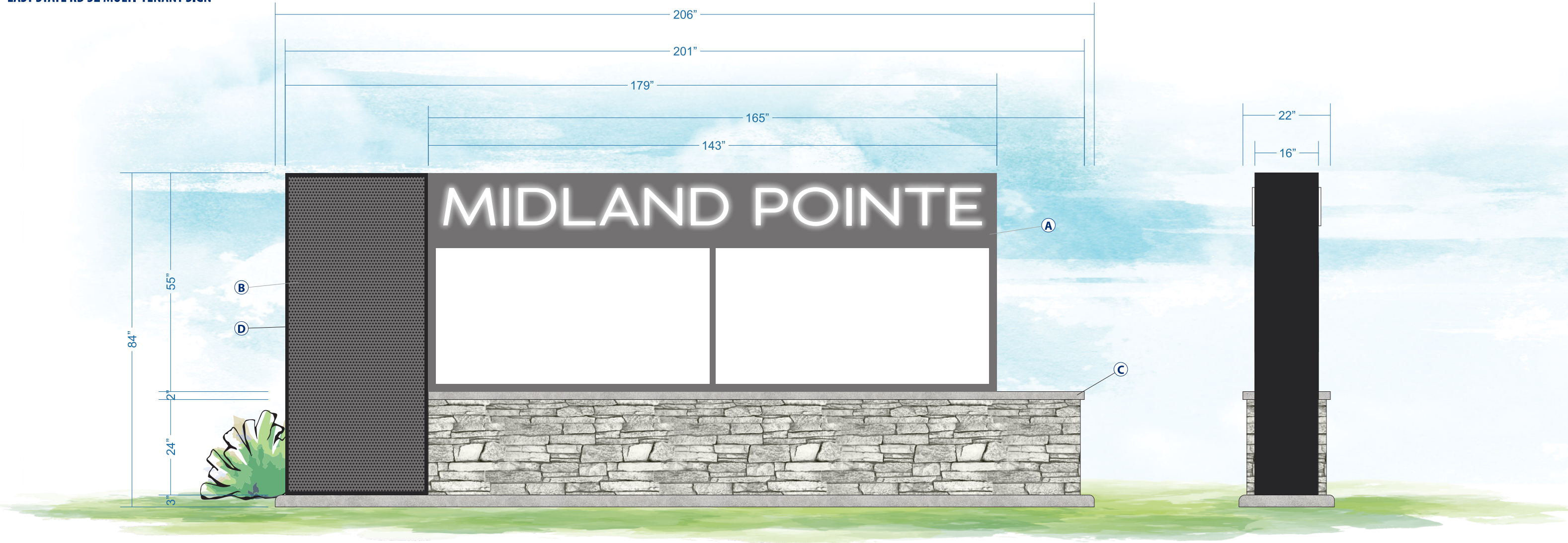
FINAL DATE & BY:

SHEET #:

2/7



EAST STATE RD 32 MULTI-TENANT SIGN



STAFF IS NOT SUPPORTIVE OF THIS ADDITIONAL SIGN AND ASKS THAT IT BE REMOVED AND NOT BE A PART OF THE APPROVAL.

FABRICATE AND INSTALL QTY 1 INTERNALLY ILLUMINATED D/F MONUMENT SIGN WITH FAUX MASONRY BASE

“MIDLAND POINTE” CABINET

**BODY** - 2” ALUMINUM ANGLE SKINNED IN .090 ALUMINUM PAINTED TO MATCH SPECS WITH ROUTED OUT COPY BACKED UP WITH 1” 7328 WHITE PUSH-THROUGH ACRYLIC  
**TENANT PANELS** - 3/16” WHITE POLYCARBONATE  
**VINYL** - TO MATCH SPECS  
**RETAINERS** - 2” TO MATCH SPECS  
**DIVIDER BAR** - 1-1/2”  
**LEDS** - WHITE

SIDE CABINET

**BODY** - 2” ALUMINUM ANGLE SKINNED IN .090 ALUMINUM PAINTED AND PRINTED TO MATCH SPECS

BASE

**BODY** - 2” SQ ALUMINUM TUBING SKINNED IN .090 ALUMINUM W/ TEXTURE PLUS LEDGESTONE SELECT INTERLOCKING FAUX WALL PANELS  
**CAP** - 2” SQ ALUMINUM SKINNED IN .090 ALUMINUM PAINTED WITH SAND TEXTURE  
**FOOTER**- CONCRETE FOOTER  
**POST** - QTY 2 - 4” SCH 40



COLOR SPECIFICATIONS:

- A PMS 424 C CHARCOAL GREY
- B DIG. PRINT
- C PMS 7 C COOL GREY (SAND TEXT.)
- D PMS 426 C BLACK
- E

- F
- G
- H
- I
- J

*NOTE: THERE WILL BE COLOR VARIATIONS FROM THIS PRINTED DRAWING TO THE FINAL PRODUCT. COLORS SPECIFIED WILL ALWAYS BE MATCHED AS CLOSELY AS POSSIBLE. RENDERING IS BASED ON ESTIMATED DIMENSIONS. A FINAL SURVEY MAY ALTER ILLUSTRATED REPRESENTATION AND PLACEMENT.*

*IF ILLUMINATED: WILL BE WIRED TO 120 VOLT UNLESS OTHERWISE SPECIFIED. THIS SIGN IS INTENDED TO BE INSTALLED IN ACCORDANCE WITH THE REQUIREMENTS OF ARTICLE 600 OF THE NATIONAL ELECTRICAL CODE AND/OR OTHER APPLICABLE LOCAL CODES. THIS INCLUDES PROPER GROUNDING AND BONDING OF THE SIGN.*

SCI REP: CB	DESIGNER: NK	PERMIT INFORMATION: N/A	
	REVISION DATE: 12/01/2023	FINAL DATE & BY:	SHEET #: 3/7
DATE: 05/12/2023			



HAZEL DELL PARKWAY MULTI-TENANT SIGN

FABRICATE AND INSTALL QTY 1 INTERNALLY  
ILLUMINATED D/F MULTI-TENANT SIGN WITH FAUX MASONRY BASE

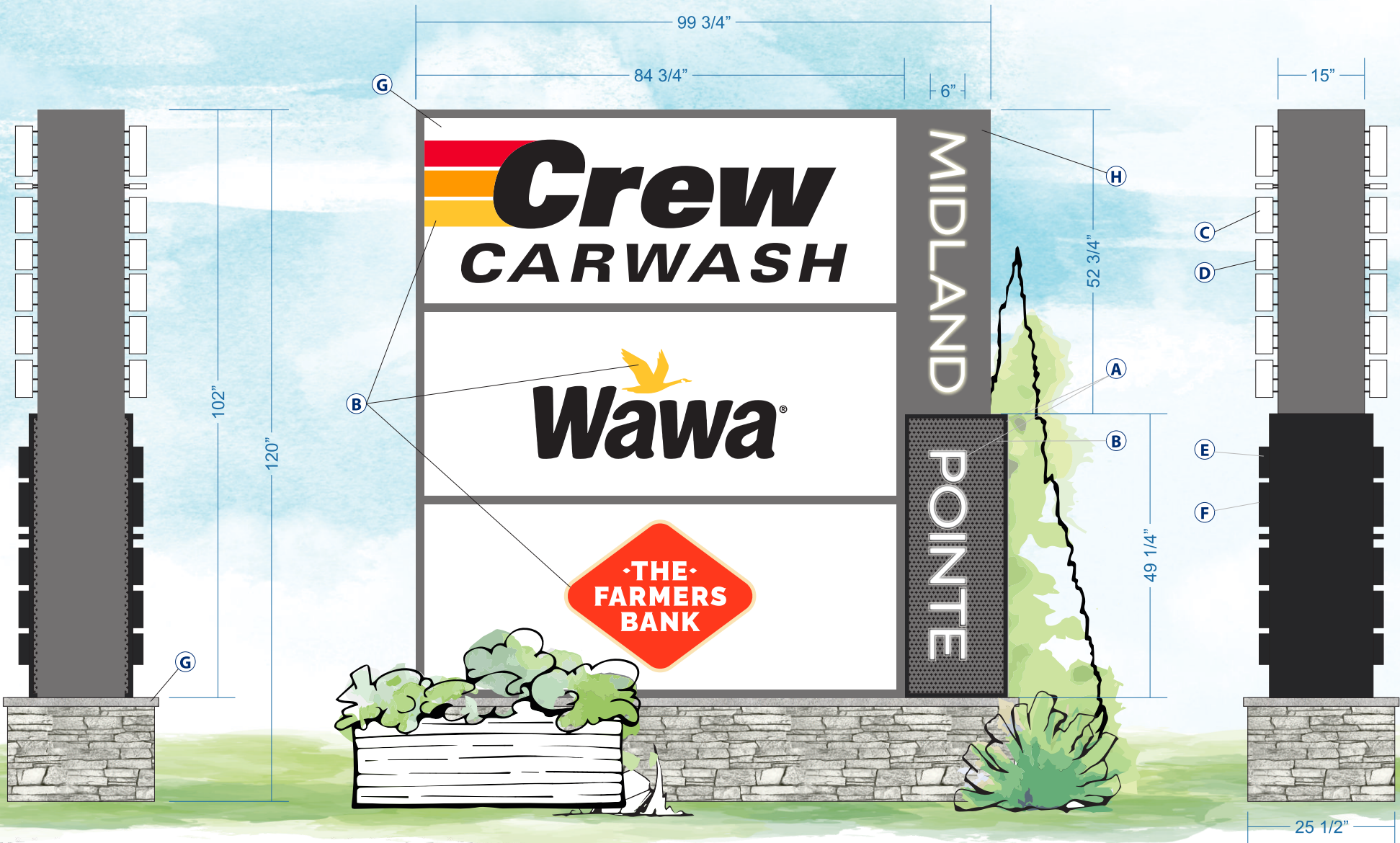
“MIDLAND” CABINET  
BODY - 2” ALUMINUM ANGLE SKINNED IN .090 ALUMINUM  
PAINTED TO MATCH SPECS

“MIDLAND POINTE” LETTERS ON BACKER PANELS  
FACES - 3/16” 7328 WHITE ACRYLIC  
RETURNS - 3” TO MATCH SPECS  
TRIM CAPS - 1” TO MATCH SPECS  
BACKS - .063 ALUMINUM  
LEDS - STREETFIGHTER CHOICE - HO  
BACKER PANELS - .090 ALUMINUM PAINTED TO MATCH SPECS

“POINTE” CABINET  
BODY - 2” ALUMINUM ANGLE SKINNED IN .090 ALUMINUM  
PAINTED AND PRINTED TO MATCH SPECS

MAIN CABINET  
BODY - 2” ALUMINUM ANGLE SKINNED IN .090 ALUMINUM  
PAINTED TO MATCH SPECS  
TENANT PANELS - 3/16” WHITE POLYCARBONATE  
VINYL - MATCH SPECS  
RETAINERS - 2” TO MATCH SPECS  
DIVIDER BARS - 1 1/2” TO MATCH SPECS

BASE  
BODY - 2” SQ ALUMINUM TUBING SKINNED IN .090 ALUMINUM  
W/ TEXTURE PLUS LEDGESTONE SELECT INTERLOCKING  
FAUX WALL PANELS  
CAP - 2” SQ ALUMINUM SKINNED IN .090 ALUMINUM PAINTED WITH SAND  
TEXTURE  
FOOTER- CONCRETE FOOTER  
POST - QTY 2 - 4” SCH 40



COLOR SPECIFICATIONS:

A PMS 426 C BLACK

B DIG. PRINT

C WHITE RETURNS

D WHITE TRIM CAPS

E BLACK RETURNS

F BLACK TRIM CAPS

G PMS 7 C COOL GREY (SAND TEXT.)

H PMS 424 C CHARCOAL GREY

I

J

NOTE: THERE WILL BE COLOR VARIATIONS FROM THIS PRINTED DRAWING TO THE FINAL PRODUCT. COLORS SPECIFIED WILL ALWAYS BE MATCHED AS CLOSELY AS POSSIBLE. RENDERING IS BASED ON ESTIMATED DIMENSIONS. A FINAL SURVEY MAY ALTER ILLUSTRATED REPRESENTATION AND PLACEMENT.

IF ILLUMINATED: WILL BE WIRED TO 120 VOLT UNLESS OTHERWISE SPECIFIED. THIS SIGN IS INTENDED TO BE INSTALLED IN ACCORDANCE WITH THE REQUIREMENTS OF ARTICLE 600 OF THE NATIONAL ELECTRICAL CODE AND/OR OTHER APPLICABLE LOCAL CODES. THIS INCLUDES PROPER GROUNDING AND BONDING OF THE SIGN.

SCI REP:  
CB

DATE:  
05/12/2023

DESIGNER:  
NK

REVISION DATE:  
12/01/2023

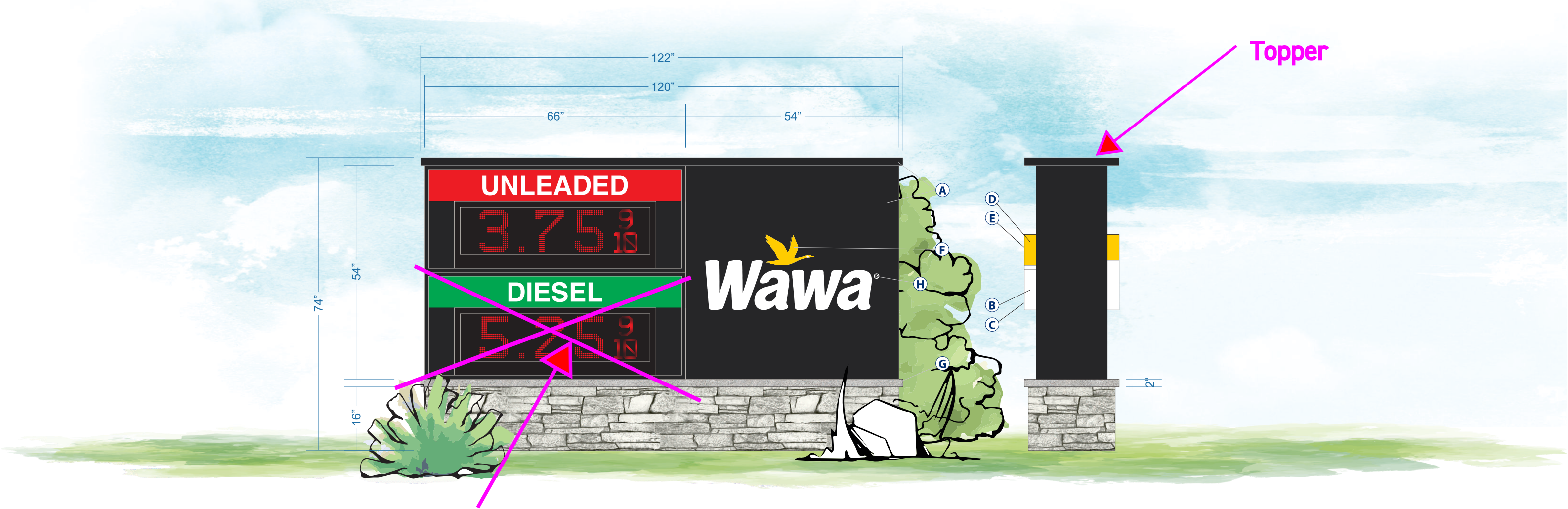
PERMIT INFORMATION:  
N/A

FINAL DATE & BY:

SHEET #:

4/7





STAFF IS NOT SUPPORTIVE OF THE TWO GAS PRICE SIGNS AS WE HAVE BEEN CONSISTANT IS THE PAST YEARS TO ALLOW ONLY ONE GAS SIGN.

FABRICATE AND INSTALL QTY 1 INTERNALLY ILLUMINATED D/F MONUMENT SIGN WITH FAUX MASONRY BASE

WAWA CABINET

**BODY** - 2" ALUMINUM ANGLE SKINNED IN .090 ALUMINUM PAINTED TO MATCH SPECS  
**CAP** - 2" SQ ALUMINUM SKINNED IN .090 ALUMINUM PAINTED TO MATCH SPECS

WAWA CHANNEL LETTERS

**FACES** - 3/16" 7328 WHITE ACRYLIC  
**VINYL** - TO MATCH SPECS  
**RETURNS** - 3" TO MATCH SPECS  
**TRIM CAPS** - 1" TO MATCH SPECS  
**BACKS** - .063 ALUMINUM  
**LEDS** - STREETFIGHTER CHOICE - HO

BASE

**BODY** - 2" SQ ALUMINUM TUBING SKINNED IN .090 ALUMINUM W/ TEXTURE PLUS LEDGESTONE SELECT INTERLOCKING FAUX WALL PANELS  
**CAP** - 2" SQ ALUMINUM SKINNED IN .090 ALUMINUM PAINTED WITH SAND TEXTURE  
**FOOTER** - CONCRETE FOOTER  
**POST** - QTY 2 - 4" SCH 40



COLOR SPECIFICATIONS:

**A** PMS 426 C BLACK

**B** WHITE RETURNS

**C** WHITE TRIM CAPS

**D** PMS 116 C YELLOW RETURNS

**E** PMS 116 C YELLOW TRIM CAPS

**F** ORACAL 8500-021 YELLOW

**G** PMS 7 C COOL GREY (SAND TEXT.)

**H** ORACAL 651-010 WHITE

**I**

**J**

*NOTE: THERE WILL BE COLOR VARIATIONS FROM THIS PRINTED DRAWING TO THE FINAL PRODUCT. COLORS SPECIFIED WILL ALWAYS BE MATCHED AS CLOSELY AS POSSIBLE. RENDERING IS BASED ON ESTIMATED DIMENSIONS. A FINAL SURVEY MAY ALTER ILLUSTRATED REPRESENTATION AND PLACEMENT.*

*IF ILLUMINATED: WILL BE WIRED TO 120 VOLT UNLESS OTHERWISE SPECIFIED. THIS SIGN IS INTENDED TO BE INSTALLED IN ACCORDANCE WITH THE REQUIREMENTS OF ARTICLE 600 OF THE NATIONAL ELECTRICAL CODE AND/OR OTHER APPLICABLE LOCAL CODES. THIS INCLUDES PROPER GROUNDING AND BONDING OF THE SIGN.*

SCI REP:  
CB

DATE:  
12/01/2023

DESIGNER:  
JR

REVISION DATE:

PERMIT INFORMATION:  
N/A

FINAL DATE & BY:

SHEET #:

7/7





FABRICATE AND INSTALL QTY 1 INTERNALLY ILLUMINATED MONUMENT SIGN WITH FAUX MASONRY BASE

“APARTMENTS” CABINET

**BODY** - 2" ALUMINUM ANGLE SKINNED IN .090 ALUMINUM PAINTED TO MATCH SPECS WITH ROUTED OUT COPY BACKED UP WITH 1" 7328 WHITE PUSH-THROUGH ACRYLIC  
**LEDS** - WHITE

SIDE CABINET

**BODY** - 2" ALUMINUM ANGLE SKINNED IN .090 ALUMINUM PAINTED AND PRINTED TO MATCH SPECS

BASE

**BODY** - 2" SQ ALUMINUM TUBING SKINNED IN .090 ALUMINUM W/ TEXTURE PLUS LEDGESTONE SELECT INTERLOCKING FAUX WALL PANELS  
**CAP** - 2" SQ ALUMINUM SKINNED IN .090 ALUMINUM PAINTED WITH SAND TEXTURE  
**FOOTER**- CONCRETE FOOTER  
**POST** - QTY 2 - 4" SCH 40



COLOR SPECIFICATIONS:

- A PMS 424 C CHARCOAL GREY
- B DIG. PRINT
- C PMS 7 C COOL GREY (SAND TEXT.)
- D PMS 426 C BLACK
- E

- F
- G
- H
- I
- J

*NOTE: THERE WILL BE COLOR VARIATIONS FROM THIS PRINTED DRAWING TO THE FINAL PRODUCT. COLORS SPECIFIED WILL ALWAYS BE MATCHED AS CLOSELY AS POSSIBLE. RENDERING IS BASED ON ESTIMATED DIMENSIONS. A FINAL SURVEY MAY ALTER ILLUSTRATED REPRESENTATION AND PLACEMENT.*

*IF ILLUMINATED: WILL BE WIRED TO 120 VOLT UNLESS OTHERWISE SPECIFIED. THIS SIGN IS INTENDED TO BE INSTALLED IN ACCORDANCE WITH THE REQUIREMENTS OF ARTICLE 600 OF THE NATIONAL ELECTRICAL CODE AND/OR OTHER APPLICABLE LOCAL CODES. THIS INCLUDES PROPER GROUNDING AND BONDING OF THE SIGN.*

SCI REP: CB	DESIGNER: NK	PERMIT INFORMATION: N/A	
	REVISION DATE: 12/01/2023	FINAL DATE & BY:	SHEET #: 6/7
DATE: 05/12/2023			