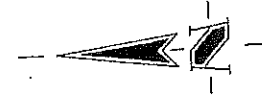


EXHIBIT E-1

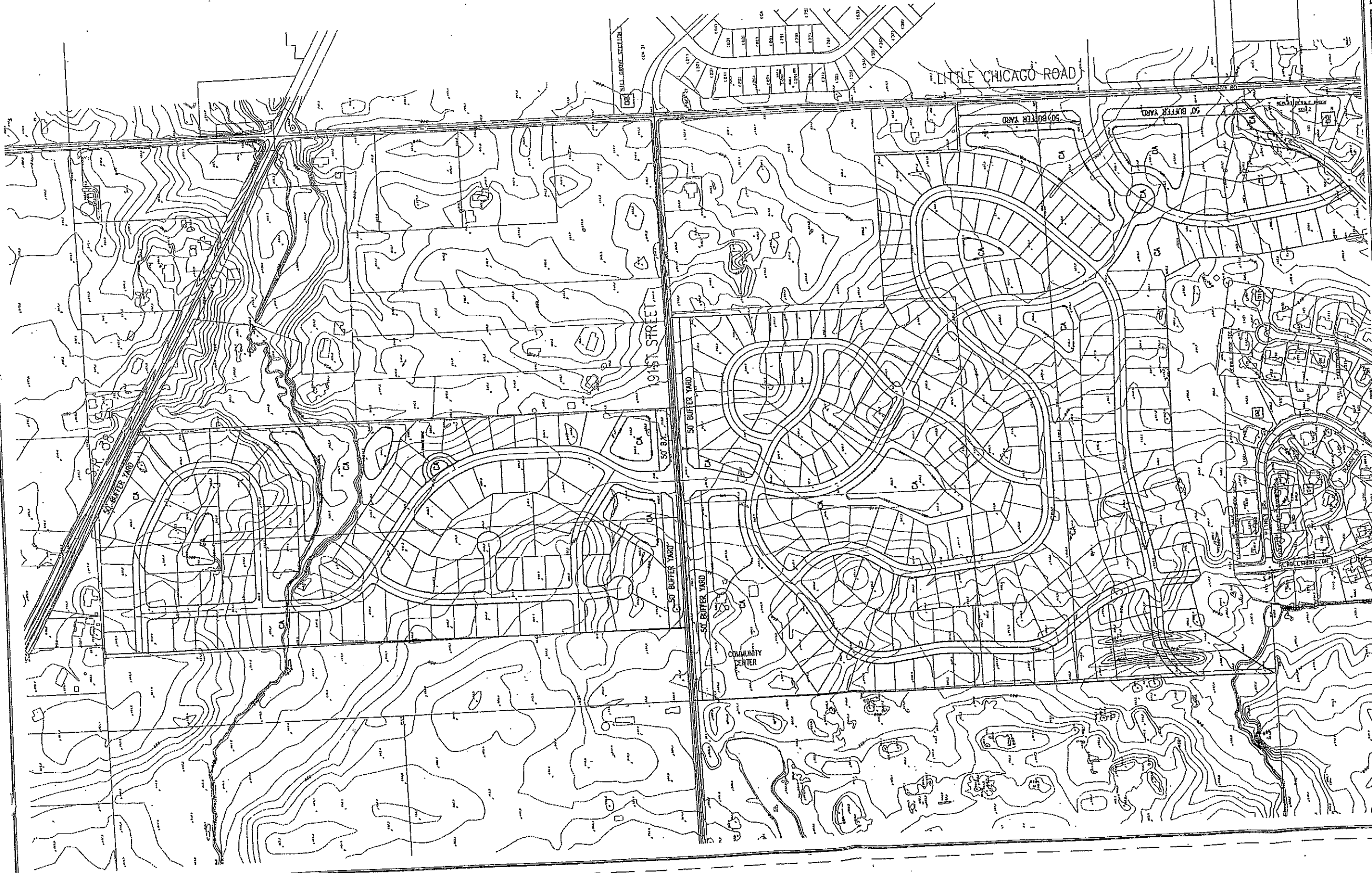
PRELIMINARY / CONCEPTUAL
ACTUAL CONFIGURATION OF
STREETS & LOTS MAY VARY.



ASSUMED NORTH
SCALE: 1" = 200'

HOLEY MOLEY SAYS
**"DON'T
DIG
BLIND"**

"IT'S THE LAW"
CALL 2 WORKING DAYS BEFORE YOU DIG
1-800-382-5544
CALL TOLL FREE
PER INDIANA STATE LAW 36-30-1991
IT IS AGAINST THE LAW TO EXCAVATE
WITHOUT NOTIFYING THE UNDERGROUND
LOCATION SERVICE TWO (2) WORKING
DAYS BEFORE COMMENCING WORK.



REVISIONS

DATE: _____
BY: _____
DESCRIPTION: _____
© EXHIBIT E-1 BY THE SCHNEIDER CORP. (2002)



Schneider
THE SCHNEIDER CORPORATION
12821 E. New Market Street
Suite 100
Carmel, IN 46032
Telephone: 317.569.8112
Fax: 317.826.6410
www.schneidercorp.com

- Architecture
- Civil Engineering
- Environmental Engineering
- Geotechnical Services
- GIS • LIS
- Home Builder Services
- Interior Design
- Land Surveying
- Landscape Architecture
- Transportation Engineering

CONNER CROSSING
NOBLESVILLE, INDIANA
PRIMROSE DEVELOPMENT
445 CRADLE DRIVE, CARMEL, IN 46032

DATE: 03/13/02	PROJECT NO.: 3659.001
DRAWN BY: DCC	CHECKED BY:
PRELIMINARY- DEVELOPMENT PLAN	
DRAWING FILE: \\S:\L\3659\3659\PI01.DWG USER: 3659-BS-ALONG PROJ: 0510P01.DWG	

SHEET NO.: **P101**